

## **MetroGIS: Performance Measures Case Study**

# **SRF CONSULTING GROUP, INC.**

**Organization:** SRF Consulting Group, Inc.  
**Staff Contact:** Robert Diedrich  
Senior GIS Specialist  
Rdiedrich@srfconsulting.com  
(763) 475-0010  
**Date of Interview:** October 2003  
**Interviewer:** Jeanne Landkamer, Landkamer Consulting  
612-722-3999

**Organizational Profile:** SRF Consulting Group, Inc., located in Plymouth, MN, is a full-service consulting firm that provides a wide range of planning, design and in-construction services for local governments, states, and other public entities. Services include local and regional government transportation plans, major river crossing studies, environmental impact statements, alternative urban area-wide reviews, archaeological assessments, market analysis, GPS collection and analysis, travel demand management plans, transportation-related design, and others.

**Uses of GIS:** All projects within the seven-county Twin Cities metropolitan area undertaken by SRF employ a variety of geospatial data made available through MetroGIS. These data are incorporated into a variety of maps and figures to convey pertinent information and concepts in reports, presentations and open house materials. Datasets frequently used in SRF projects include street centerlines, transit routes, parcels, future land use, orthophotos, soils, land cover and others.

**Recent Success:** SRF Consulting Group was hired as the lead consultant for a Trunk Highway (TH) 41 River Crossing Study in Scott and Carver Counties. The goal of the study is to identify a new Minnesota River crossing to connect TH 169 and future TH 312 in the vicinity of the existing TH 41 corridor in order to meet future travel demand caused by rapid population growth in the two counties.

In October 2003, SRF completed a draft scoping decision document for the project, which includes:

- An analysis of current and future transportation issues and needs in the corridor.
- A summary of the alternative solutions that were considered, the reasons for not carrying some alternatives forward, and a list of alternatives to be examined further in an environmental impact statement (EIS).
- A list of environmental issues to be studied in more detail in the EIS.

**Impact of MetroGIS:** The river crossing study is very complex in part because it involves multiple jurisdictions—three counties and several municipalities. MetroGIS DataFinder and the DataFinder Café data distribution tool quickly and nearly effortlessly provided SRF with accurate, up-to-date and seamless data covering the multiple jurisdictions. “GIS and MetroGIS

data is the quickest, most effective and least expensive technique to produce the highest quality analysis,” according to Bob Diedrich, Senior GIS Specialist with SRF.

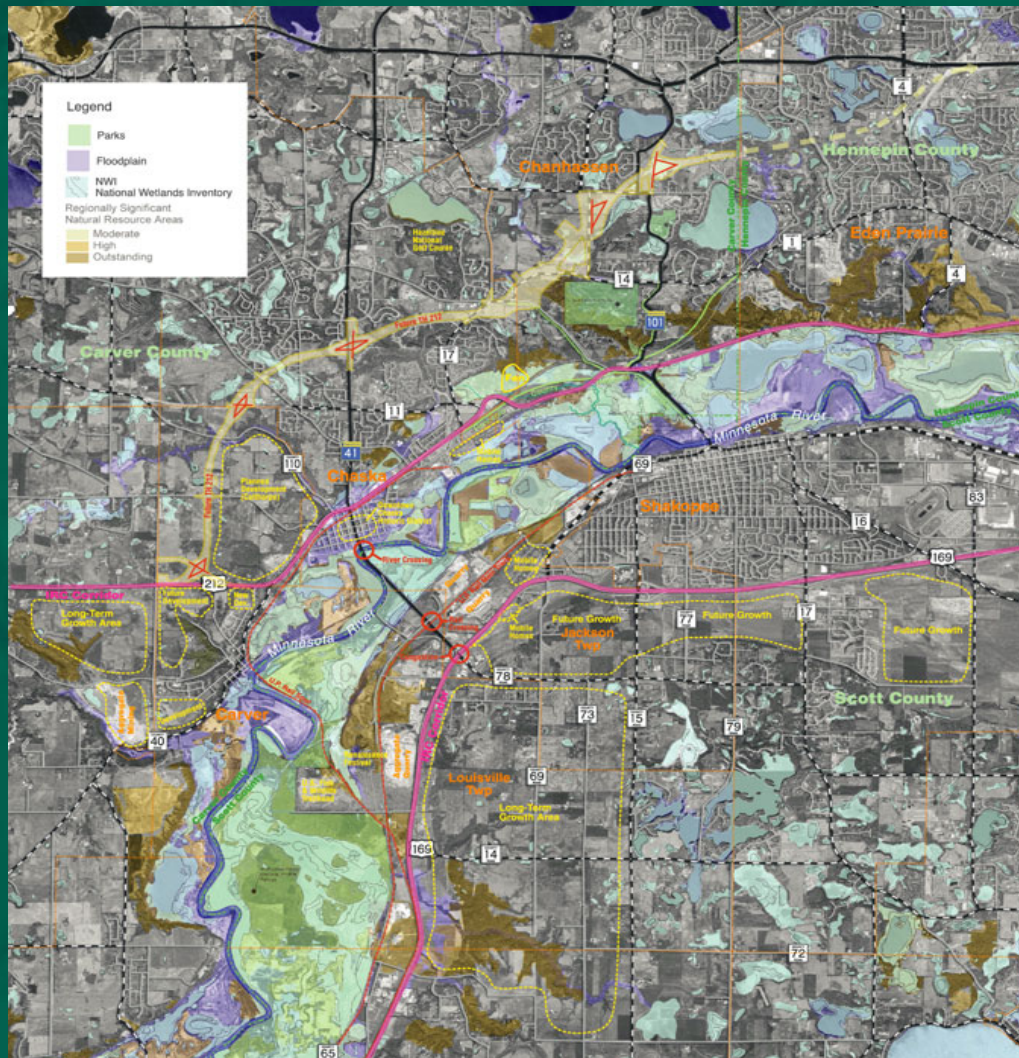
In particular, the 2020 Planned Land Use dataset has “revolutionized our planning practices,” said Diedrich. “This data has saved considerable time and effort in identifying and analyzing future development patterns. Before this data became available, we used paper maps for future land use patterns. We are saving our clients many dollars throughout the project, not to mention that the foundation of the analysis is more reliable and accurate.”

MetroGIS regional datasets have had some unexpected uses for SRF. For example, the existing and future land use datasets show park land and water. SRF can extract those features and create stand-alone layers, thus avoiding having to acquire them elsewhere.

In summary, the regional datasets made available through MetroGIS, and the ease with which they can be acquired through DataFinder Café, create productivity gains and cost savings for SRF, which in turn means reduced costs for their clients.

# TH 41 - Minnesota River Crossing

## Transportation Issues and Constraints



Geographic Information Systems