

# The Evolution of GIS in Ramsey County

David D. Claypool, PLS  
Ramsey County Surveyor





History and Development of  
The First County GIS  
In Minnesota



# In the beginning...

---

- 1984
  - Planning the Land Information System (LIS)
    - County Surveyor and Public Works
    - Information Services
    - Taxation



# Building the Foundation

- October, 1985
  - **Short-Line High Accuracy Measurements** collection using **GPS**



MINNESOTA  
10-16-85



MINNESOTA  
10-16-85

# Building the Foundation

- 1986
  - PLSS
    - Coordinate-controlled basemap
  - Digitized Data Collection
    - Parcels
      - Hand drawn half-section maps
    - Physical Features
      - 1985 aerial photography



# From LIS to GIS

---

- About this time, someone decided to call all of this a Geographic Information System (GIS).

**GIS**

---





# Ramsey County GIS: Growing Through Collaboration

The Past Ten Years



# Partnerships

---

- Ramsey County User Group
    - Municipalities
    - School Districts
    - Watershed and Soil & Water Conservation Districts
    - Community GIS Consortium (neighborhood groups)
    - Wilder Research Center
    - North Metro I-35W Corridor Coalition
-

# Partnerships

---

- MetroGIS
    - Data agreements
  - GeoSPARC Intranet Application
    - Collaborative effort with City of St Paul
    - Handle GIS data
      - Asset management
      - Business needs
-

# Established Relationships

---

- Public Health
  - Sheriff's Office
  - County Manager's Office
  - County Commissioner's Office
  - County Attorney's Office
  - St Paul Port Authority
  - ETC....
-

# Processing Data With GIS

- Parcel boundaries
  - Continuously Updated
  - Based on changes received from Records & Revenue
  - Coordinate Geometry (COGO)
  - City of St Paul



# Processing Data With GIS

---

- Parcel Tax Attribute and CAMA data
    - Enhance and apply quality control to raw tax data
    - Warehouse data for distribution
    - Prepare data for departmental contracts
-

# Updating Physical Features

- Centralized bidding
  - Cost savings
  - Three year cycle

**RAMSEY COUNTY  
REQUEST FOR BIDS FOR PROFESSIONAL SERVICES**

**Geographic Information System Base Mapping**

**SCOPE OF WORK**

The successful bidder(s) will furnish all labor, materials, transportation, tools, supplies, equipment, etc. necessary for the following work:

**I. Data collection, processing, and updating for the specified project areas.**

**A. Photogrammetric features to be captured and updated for the following project area:**

- 1) County of Ramsey – entire county area

**Layers:**

**Structures**

- any building larger than 80 sq. ft.
- outdoor swimming pools
- water towers
- water structures

**Roads**

- road edges
- railroads

**Water**

- open water areas discernible by observation

**Water Line**

- narrow open water not discernible by area

**Bridges**

- bridges

These photogrammetric features are described in more detail in attached *exhibit B*.

**Note:** Product to be delivered shall be delivered in AutoCADr.12 ASCII DXF, Arc/Info v.7.x, or other compatible format utilizing Ramsey County Coordinates.

# Data Dissemination

- Fulfill special requests for GIS and tax information
  - Data
  - Mapping
  - Reports
- GIS Kiosk for public access

## GISDATA

## FEES

### Specialized or Custom Made Map

Digital Medium (Parcels and/ or Physical Features)

**\$0.01-0.05** per Parcel +  
**\$50.00** per hour T&E (a)

Hard Copy Medium

**\$50.00** per hour T&E (a) +  
Plotting Charge

### Plotting; Mounting; and Laminating

**Plotting Charge** for Color or Black and White on Paper

**\$1.00** for an 8½" x 11" map  
**\$1.00** for an 8½" x 14" map  
**\$5.00** for an 11" x 17" map  
**\$10.00** for a 24" x 36" map  
**\$15.00** for a 30" x 36" map (b)

**Map Mounting Charge** for a plot on Foam Board (c)

**\$20.00** for a 24" x 36" map  
**\$25.00** for a 30" x 40" map  
**\$28.00** for a 30" x 60" map

**Map Mounting and Laminating Charge**

for a plot on Foam Board (c)

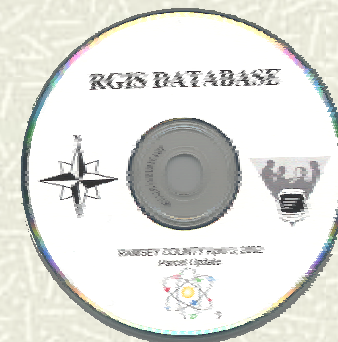
**\$31.00** for a 24" x 36" map  
**\$39.00** for a 30" x 36" map  
**\$43.00** for a 30" x 60" map

### NOTES:

- (a) T &E is the acronym for **Time and Equipment** which denotes the rate (\$50.00 per hour) charged for staff time and computer time combined.
- (b) Any plot that is larger than 24" x 36" shall be charged by the lineal foot in increments of one foot. Each lineal foot increment fee shall be \$5.00. Plots that are not in even one-foot increments, for the purpose of establishing the plotting charge, shall be charged the rate pertaining to the next larger foot increment. Any plot that is made using the HP Model 755CM plotter, will have a maximum width of 36 inches.
- (c) Map mounting and/ or laminating charges listed above pertain to any size map up to that stated size.

# Data Dissemination

- Automated 1/2 & 1/4 Section Map generation
- Monthly data distribution to User Group Members
  - FTP Site
  - CD
- MetroGIS
- DataFinder - Metadata



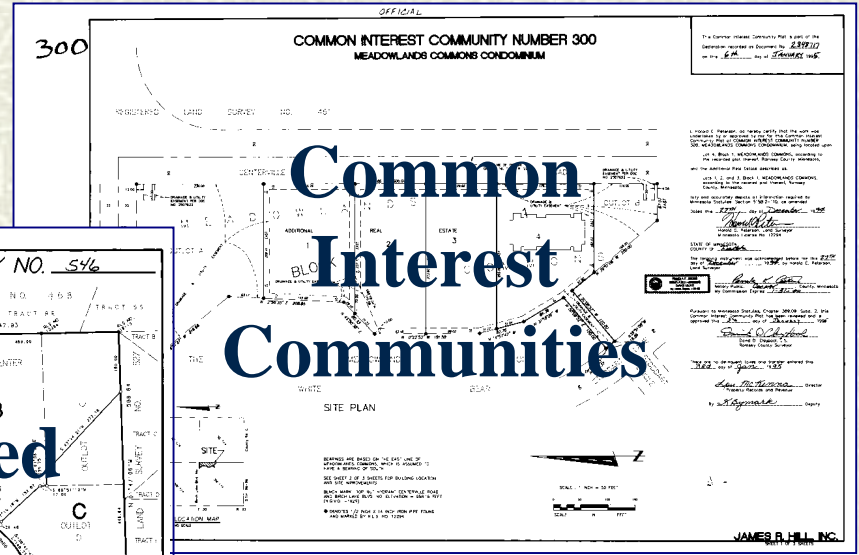
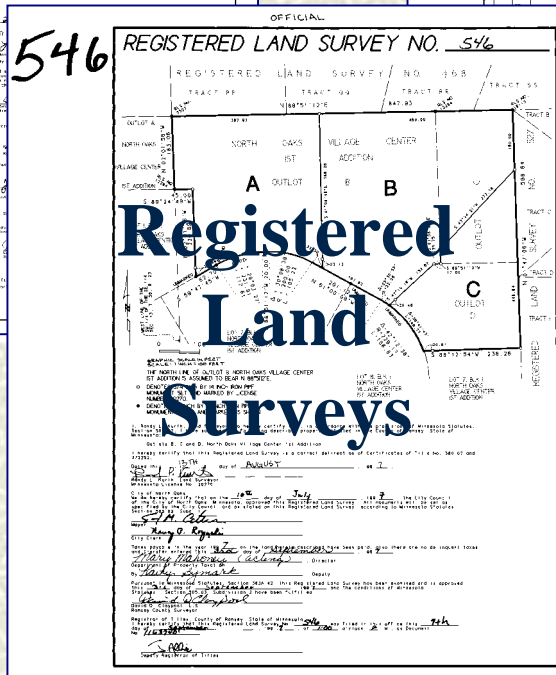
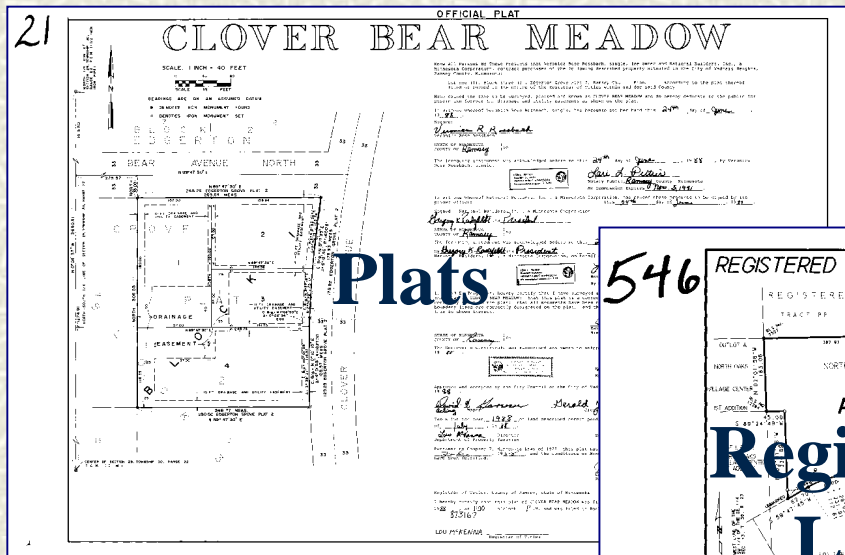
# Data Dissemination

---

- FTP sites
    - Public Site <ftp://ftp.co.ramsey.mn.us>
      - Anonymous login / Open to anyone
      - 2000 DOQQs
      - User Group Handbook
      - Transfer and exchange data
    - User Group Site
      - Password protected / User access
      - Data updates
      - Tax data to the City of St Paul
      - 2000 DOQQs
      - User Group Handbook
-

# Data Dissemination

- Scanned documents available on the web



Currently hosted by the City of St Paul  
<http://gis.ci.stpaul.mn.us/rcsurvey>