



MetroGIS



Shared Geospatial Needs Assessment WORKSHOP

January 13, 2011

Facilitated by:



APPLIED GEOGRAPHICS, INC.

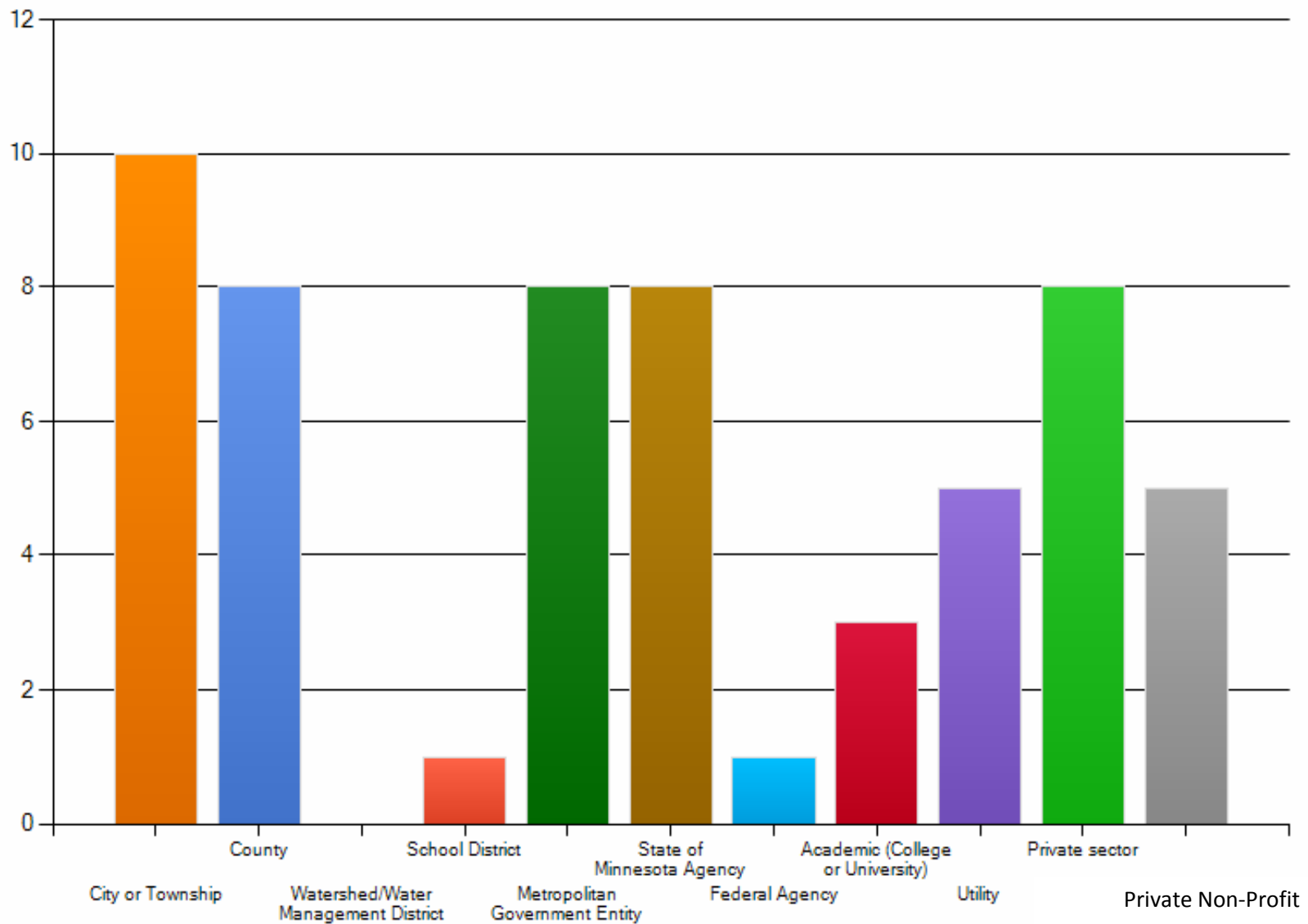
Empowering People with Spatial Solutions

Introductions

- **Terry Schneider**, Chair MetroGIS Policy Board
- **Randall Johnson**, MetroGIS Staff Coordinator
- **Michael Turner**, AppGeo Project Manager
 - **Morgen Healy**, AppGeo GIS Analyst
 - **Terese Rowekamp**, Breakout Facilitator

Workshop Attendees

(registrations as of Tuesday, 2pm)



Goals

Discussion focused on **identifying the priorities** that MetroGIS should be focused on **for the next 3-5 years**. Including, but is not limited to:

- Identifying **enhancements to existing regional solutions**
- Identifying **new regional solutions**
- Identifying and fulfilling **additional “shared information needs”** of the community
 - Including actionable collaboration opportunities
- Updating and re-articulating the **role & mission** of MetroGIS for the next decade

Agenda

8:00 – 9:00am Registration & continental breakfast

- **9:00 – 9:20am** **Introductions, Background & Project Overview**
- **9:20 – 9:50am** **Review of Survey Findings**
- **9:50 – 10:30am** **Interactive discussion & questions & answers**

10:30 – 10:50am Refreshment Break

- **10:50 – 11:30am** **Break-out room discussions/brainstorming**
- **11:30 – 12:00pm** **Breakout reporting and wrap-up**

Background

- During 1996-1997 MetroGIS conducted the first “MetroGIS Information Needs Assessment”
- Identified 13 priority “shared information needs”
 - Identified through a highly participatory process
 - Information needs identified through “need statements” phrased as “I need to know...”
 - *“I need to know the boundaries of and location of a specified parcel”*
 - 850 responses culled into 87 “information need” statements
 - 13 priorities were identified from that pool
 - A 14th – emergency services – was added in 2002 (post-9/11)
- This work has guided MetroGIS priorities for the last ~15 years

Priority Information Need Statements from 1996-1997

Currently being met, or partially met:

I need to know...

1. The **boundaries** and characteristics of a specified jurisdiction
2. The **street addresses** for specified locations
3. **Land use** or development plans
4. The boundaries and location of a specified **parcel**
5. The boundaries and characteristics of **census areas**
6. The locations and characteristics of **roads/highways**
7. The **socioeconomic** characteristics of an area's population
8. The **vegetation** growing at a specified location or within a specified area
9. A unique identifying attribute of a land **parcel**, such as **parcel ID**

Currently being not met:

I need to know...

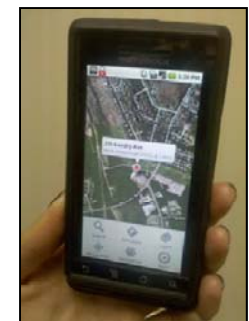
1. Who has **rights to a property** (ownership, leases, **easements**, right-of-way)
2. The locations and characteristics of **water features**
3. **How a piece of land is being used**, including whether or not it is vacant
4. **Regulations** that affect the use of a piece of land, **such as zoning**
5. Information for **emergency preparedness**

Project Context

- Providing an update to the 1996-1997 work
- Setting priorities for the next 3-5 years
- **A lot has changed** – new technology/data
 - Maturity of the Internet
 - Emergence of cloud computing
 - Arrival of, and increased viability of Open Source
 - Cost of data (e.g. orthoimagery and elevation)
 - Social networking
 - Explosion of mobile devices
 - Volunteered Geographic Information
 - Public knowledge via Google and personal navigation devices



OPENGEO SUITE
Enterprise Edition 2.2



The Bottom Line Questions

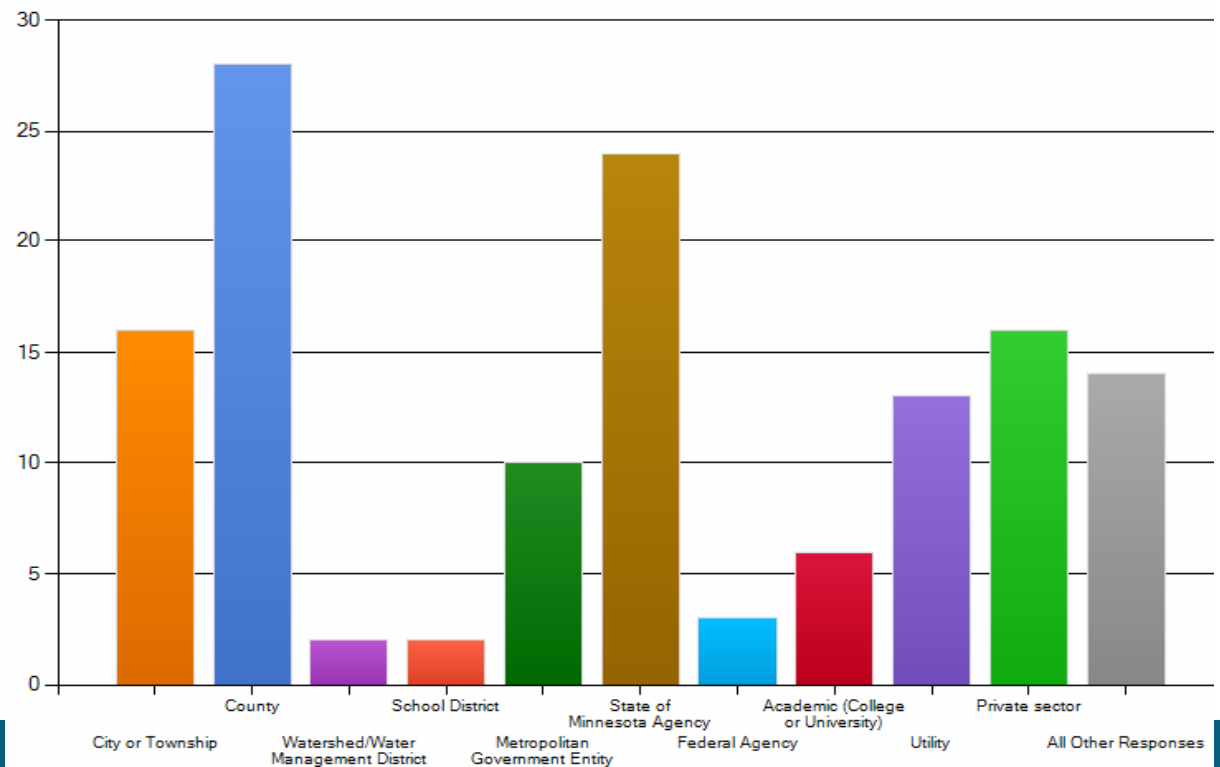
- What should MetroGIS be focused on doing?
- What refinements to MetroGIS will:
 - Make it more effective?
 - Help it better meet the needs of the community?

We learned a lot from the Survey

- Survey open from Dec. 14, 2010 – Jan. 7, 2011
- 135 total responses
 - Many of these were only partially complete

- Reflected a great cross-section of users/partners

The following category best describes my organization:



Survey Findings

We will look at:

- How are the Endorsed Solutions working?
 - And how can they be improved?
- Are the remaining, unmet info needs still a priority?
- What are the potential Next Generation Needs?
 - Data and web resources
- What were the key needs, issues and ideas that were highlighted?
 - I.e., showed up in multiple survey responses

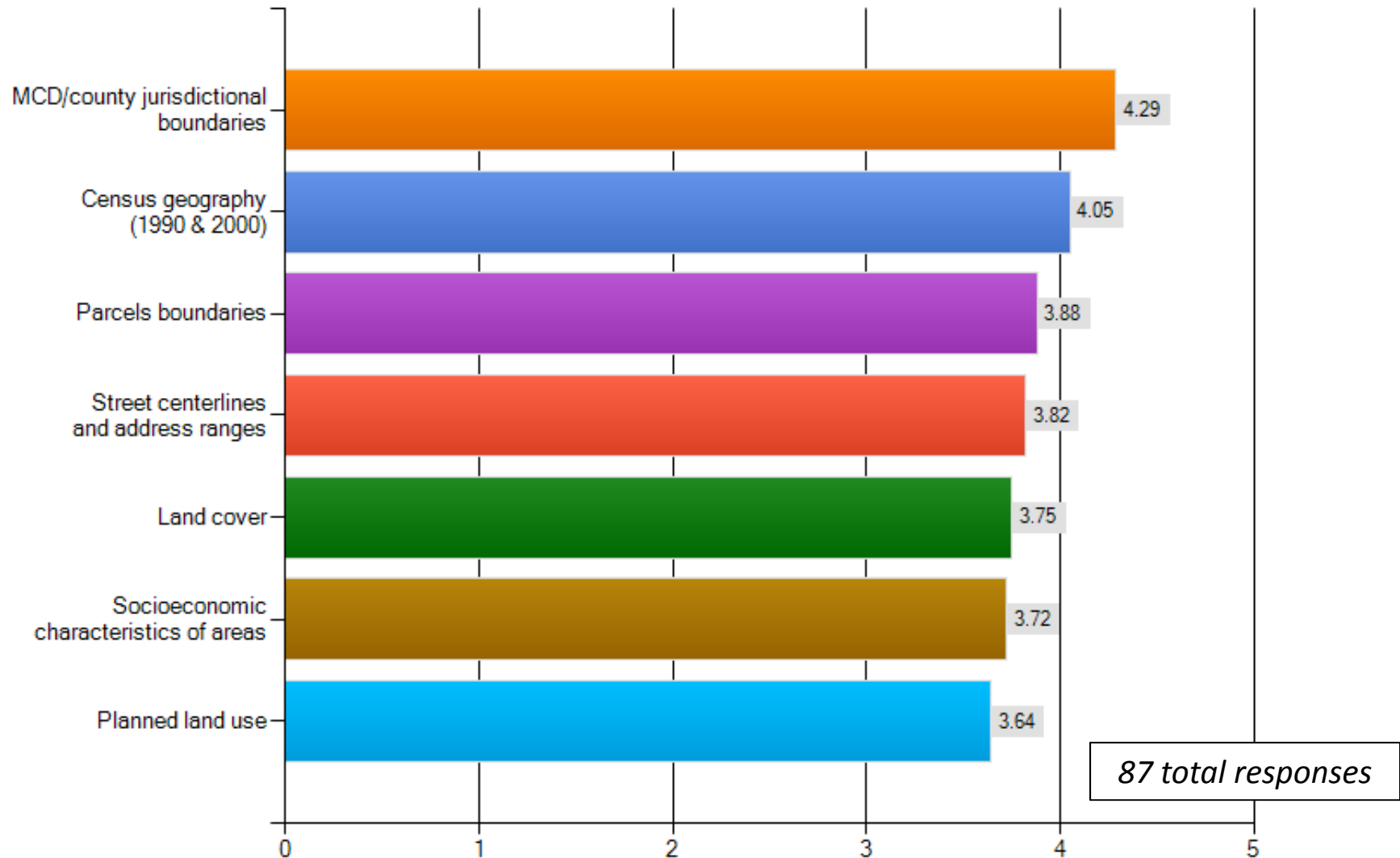
Do current solutions meet your Information Needs?

Where an endorsed solution exists

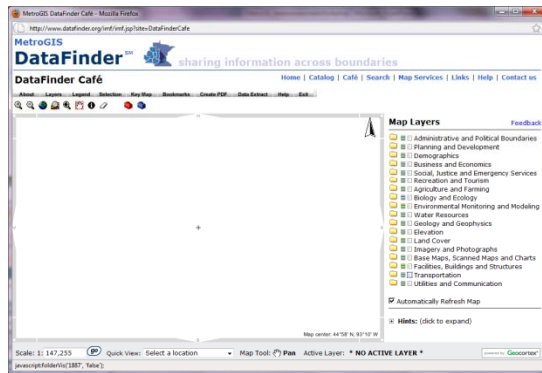
I Need To Know...	Endorsed Solution	% Yes	% No	% I Don't Know	Number of Responses
The boundaries and characteristics of a specified jurisdiction	County/MCD Boundaries	76	13	11	98
The street addresses for specified locations	Addressable Street Centerlines	66	13	21	96
	Parcels	59	20	21	95
Land use or development plans	Planned Land Use	36	12	52	95
The boundaries and location of a specified parcel	Parcels	69	16	15	95
The boundaries and characteristics of census areas	1990/2000 Census Boundaries	78	5	17	95
The locations and characteristics of roads/highways	Street Centerlines	62	16	22	93
The socioeconomic characteristics of an area's population	Socioeconomic Resources Page	41	7	52	95
The vegetation growing at a specified location or within a specified area	Land Cover	47	10	43	95
A unique identifying attribute of a land parcel , such as parcel ID	Parcels	74	9	17	96

Do the Regional Data Solutions Meet Your Business Needs?

Please rate, on a scale of 1 - 5, how well the following MetroGIS regional datasets meet your business needs.

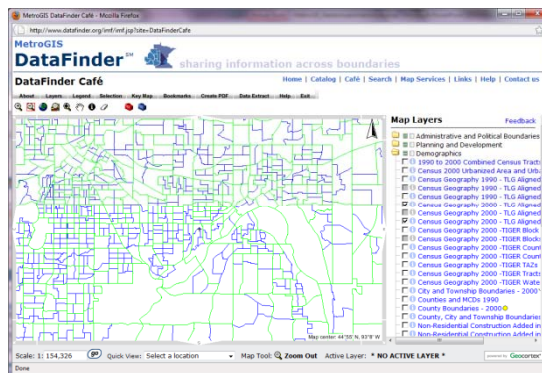


Suggested Improvements to the existing Endorsed Solutions



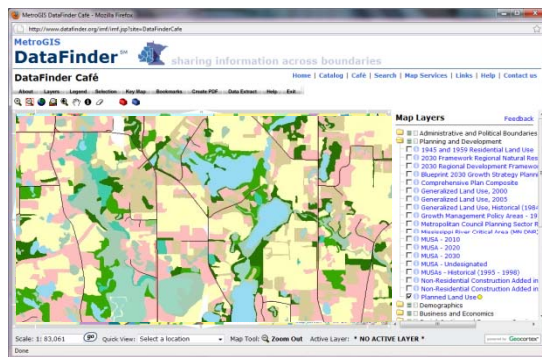
- **Parcels**

- Improve quality, consistency
- **Broaden access**; include private sector and non-profits
- Increase completeness of attributes



- **Census Geography**

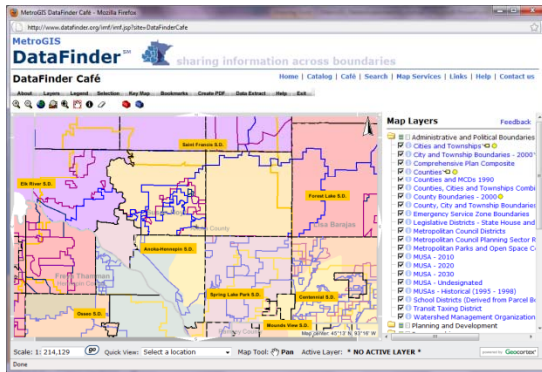
- Expedite inclusion of 2010 information
- Broaden geographic coverage beyond Metro
- Additional attributes (e.g., home/work; SF1, SF2, SF3, SF4)



- **Land Cover**

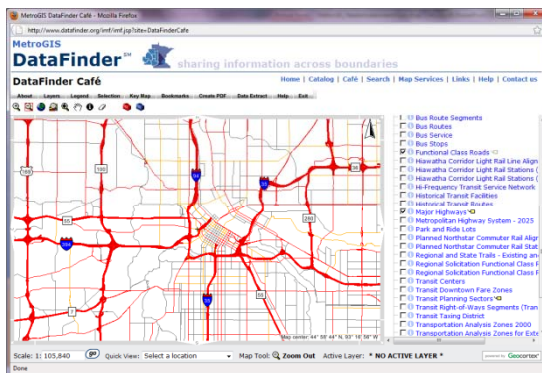
- Improved resolution and detail
- Requires updates

Suggested Improvements to the existing Endorsed Solutions



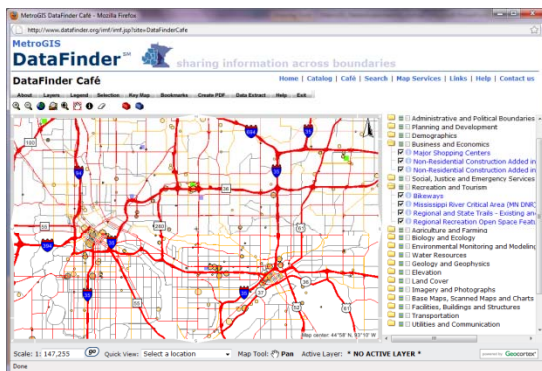
- **County/MCD Boundaries**

- Resolve annexation issues
- Improve maintenance/updates
- Merge WI and MN



- **Street Centerlines**

- **Broaden access**; include non-profits
- Increase update frequency from quarterly
- Improve address ranges
- Add routability and one-way street attributes



- **Socioeconomic Characteristics**

- Identify employment centers and shopping centers

Are the UNMET shared information needs still a priority?

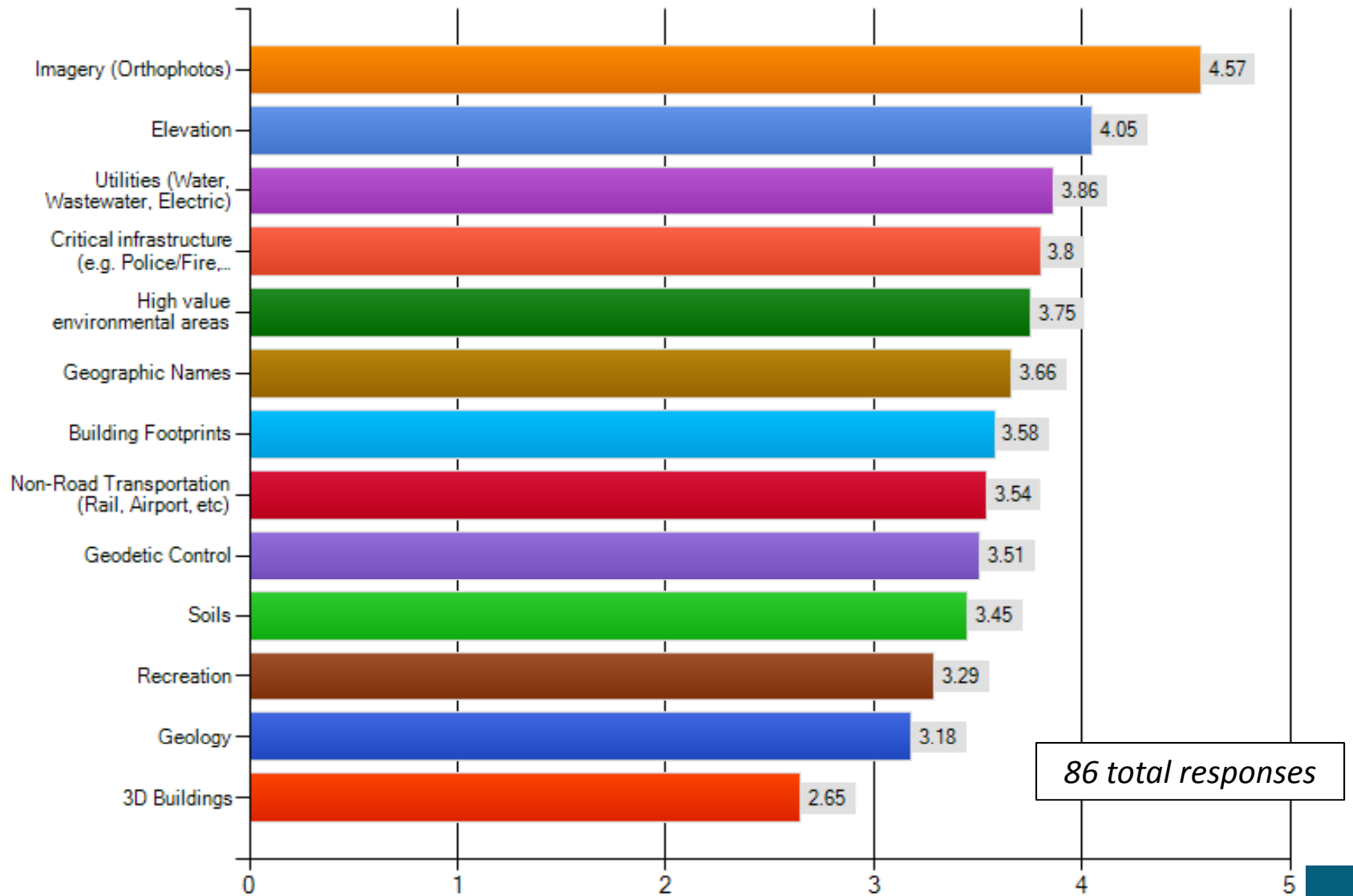
An endorsed solution does not yet exist

I Need To Know...	% Yes	% No	% I Don't Know	Number of Responses
Who has rights to a property (ownership, leases, easements, right-of-way)	52	8	40	96
The locations and characteristics of water features	63	10	27	95
How a piece of land is being used , including whether or not it is vacant	52	11	37	96
Regulations that affect the use of a piece of land, such as zoning	44	11	45	95
Information for emergency preparedness	55	9	36	95

Potential Next Generation Shared Data Needs

These did not make the “top 13” in 1996-1997

Please rank each data type from 1 - 5, with 5 meaning “Very Important”

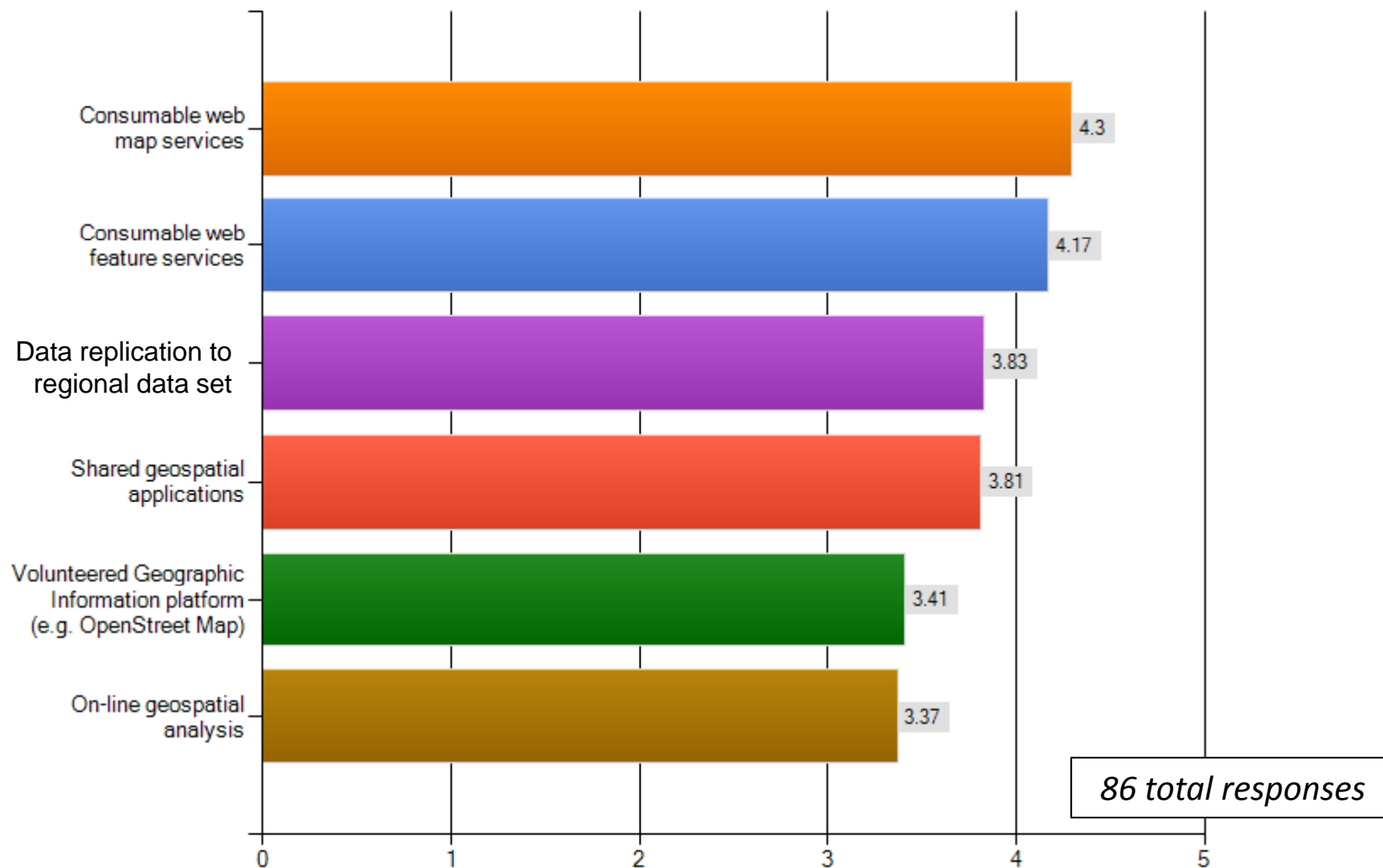


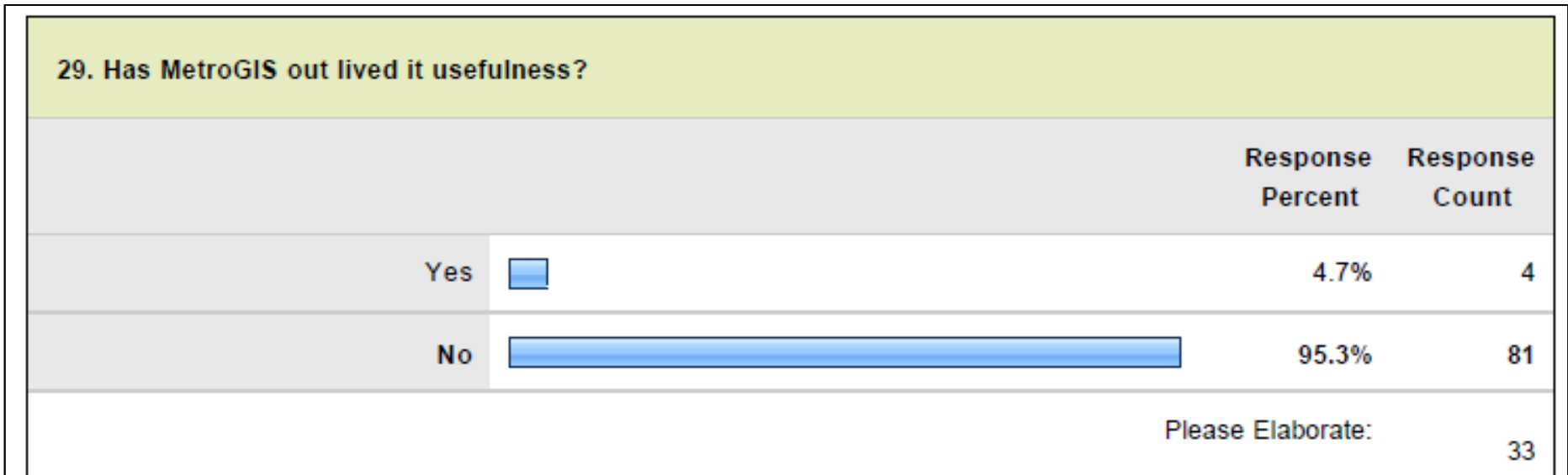
What “Information Needs” would top 4 priority “Shared Data Needs” help meet?

- **Orthophotos:**
 - See what’s on the ground, saving field visits
 - Change detection; identify where development is occurring
 - Base map and source for heads-up digitizing
- **Elevation:**
 - Buildability of land (e.g. steep slopes, erosion prone, etc.)
 - Hydrology questions: wetlands, floodplains, drainage
- **Utilities:**
 - Construction constraints and opportunities
 - Critical infrastructure protection and emergency response (e.g. hazardous materials spill)
- **Critical Infrastructure:**



Potential Next Generation Shared Resources

Please rank each data type from 1 - 5, with 5 meaning "Very Important"





- No, but:
 - “I do think it has outlived its organizational structure”
 - “Would see more efficiency with combining effort with state level focus”
 - “...needs to evolve into more of a service bureau vs a service brokerage”
- Successes in promoting regional data sharing were heavily validated, but:
 - “We like working together, but we don’t have a grand challenge”

30. Should MetroGIS's mostly volunteer support model be changed?			
		Response Percent	Response Count
Yes		33.8%	23
No		66.2%	45
		Please Elaborate:	37

- “Mixed thoughts on this”
 - Don’t lose the collaborative spirit
 - But, we need more “dedicated” “technical support”
 - But, very limited ability to raise funds in the current fiscal climate

What is your vision for the next generation of MetroGIS's efforts?

Emphasis added

- “Taking these solutions and extending them **outside the Metro**”; taking some things to “statewide level”
- “High quality **standardized data**”
- “**Services approach**” and “applying standard data sets in services”
- “Promote **data sharing**” and also “sharing of **applications** and **services**”
- “**Championing**”
 - “At policy maker level”
 - “Data standards”
- “**Web based collaborative** model” and “enhancement of activities through **social media**”
 - “Give GIS professionals a place to connect and share ideas and issues”
- “**Mobile platforms** are incredibly important to citizens, and growing.”

Ground Rules for Discussion

- **Part 1, now – 10:30am:**
What's on your mind?
 - Your thoughts, reactions, ideas to presentation and survey
 - Thoughts on MetroGIS role/mission
- **Part 2, breakout sessions,**
After the break (10:50am-11:30am)

Breakout Sessions

- Three groups led by:
 - **Group 1:** Rowekamp– Room 107
 - **Group 2:** Terner – Room 109
 - **Group 3:** Healy – Room 110
- Focused on *prioritization*
 - Shared information needs & data needs
 - Enhancements to existing endorsed solutions
 - Next generation services and new activities
 - Additional thoughts on MetroGIS role/mission evolution
- Each breakout is asked to agree on 3-5 recommendations for MetroGIS top priority action