



Accessing and Distributing Data Via MetroGIS DataFinder

Mark Kotz
GIS Database Administrator
Metropolitan Council



Topics

- What is DataFinder?
- Finding and acquiring data
- The role of metadata
- Advertising and distributing data



What is DataFinder?

- www.datafinder.org
- MetroGIS's data sharing mechanism
- Maintained by Met. Council on behalf of MetroGIS
- Have you used it?



Purpose of DataFinder?

- Allows data users to **discover** and **acquire** data
- Allows data producers to **advertise** and **distribute** data



Usage Stats

- Metadata for 161 datasets from 16 organizations
- 80% of datasets are downloadable (rest = contact someone)
- 625 dataset downloads per month
- 72% of downloads going to Twin Cities metro area



DataFinder Overview

- DataFinder Catalog
- DataFinder Search
- DataFinder Café
- Resources
- Help





DataFinder Catalog

- List of all metadata records on DataFinder
- Organized by ISO standard thematic categories
- New or updated datasets are flagged
- Direct download for many datasets via FTP
- You get whatever data is in the bundle.



DataFinder Catalog...



Distribution Options



DataFinder Search

- Same as Minnesota GeoGateway but with metro focus
- Search Criteria: Nodes, Keywords & Location
- MetroGIS node of National Spatial Data Clearinghouse



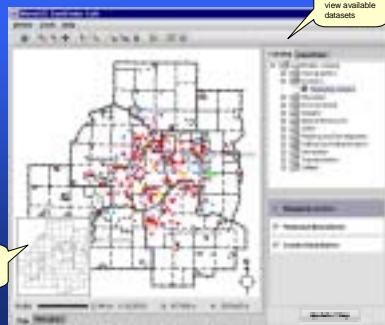
DataFinder Café

Functionality

- browse spatial data before download
- extract data by area of interest
- get different GIS formats
- download only attributes of interest
- view data you are licensed to use



Café User Interface



Viewing Metadata

Right-click layer & select Metadata to view metadata

Tab toggle between Map & Metadata

Map Browsing Tools

Identify Tool

Measure Tool

Map browsing tools: Full extent, Zoom in, Zoom out, Pan

Identify Results

3 Methods for Data Extraction & Download

1. Extract by ad hoc Polygon
2. Extract by Feature

Select layer to that contains feature to use

You will see information about the feature you selected
3. Extract by Current Extent

Currently only UTM

The Role of Metadata

- DataFinder built upon and around metadata
- Minnesota Geographic Metadata Guidelines (MGMG) or FGDC metadata standard
- Must have metadata to advertise or distribute data on DataFinder.

What is Metadata?

- Record of important facts about dataset
- Good metadata describes:
 - What the dataset is about
 - Its quality
 - How it is organized
 - Where it is on the earth's surface
 - What kind of features it contains and in what detail
 - How the dataset is distributed.

Why Create Metadata?

- Document important details
- Knowledgeable person might not be available
- Determine if dataset is appropriate for use
- Prevent bogus assumptions about the dataset
- It is less work than most people think (*just fill in what you know*).



Resources for Creating Metadata



http://www.lmic.state.mn.us/chouse/meta_help.html



Who can Post Metadata or Data on DataFinder?

- Anyone who wants to **advertise** and **distribute** geographic data for the metro area
- Our primary focus is on local and regional government
- You just need metadata.



Why should I Post Metadata or Data on DataFinder?

- Lets others discover your data
- Makes sharing data easier
- Can free up staff time spent distributing data
- Frees up staff time spent explaining data
- May make others more willing to share data with you
- You decide the distribution method and restrictions.



What if I don't have Metadata?

- Relatively easy to create
- Use free resources (tools, etc.) to help with metadata (http://www.lmic.state.mn.us/chouse/meta_help.html)
- Don't have to fill in all metadata fields. Just say what you know
- Call me with questions (It's part of my job.)



Mark Kotz
 GIS Database Administrator
 Metropolitan Council
 651-602-1644
mark.kotz@metc.state.mn.us

