

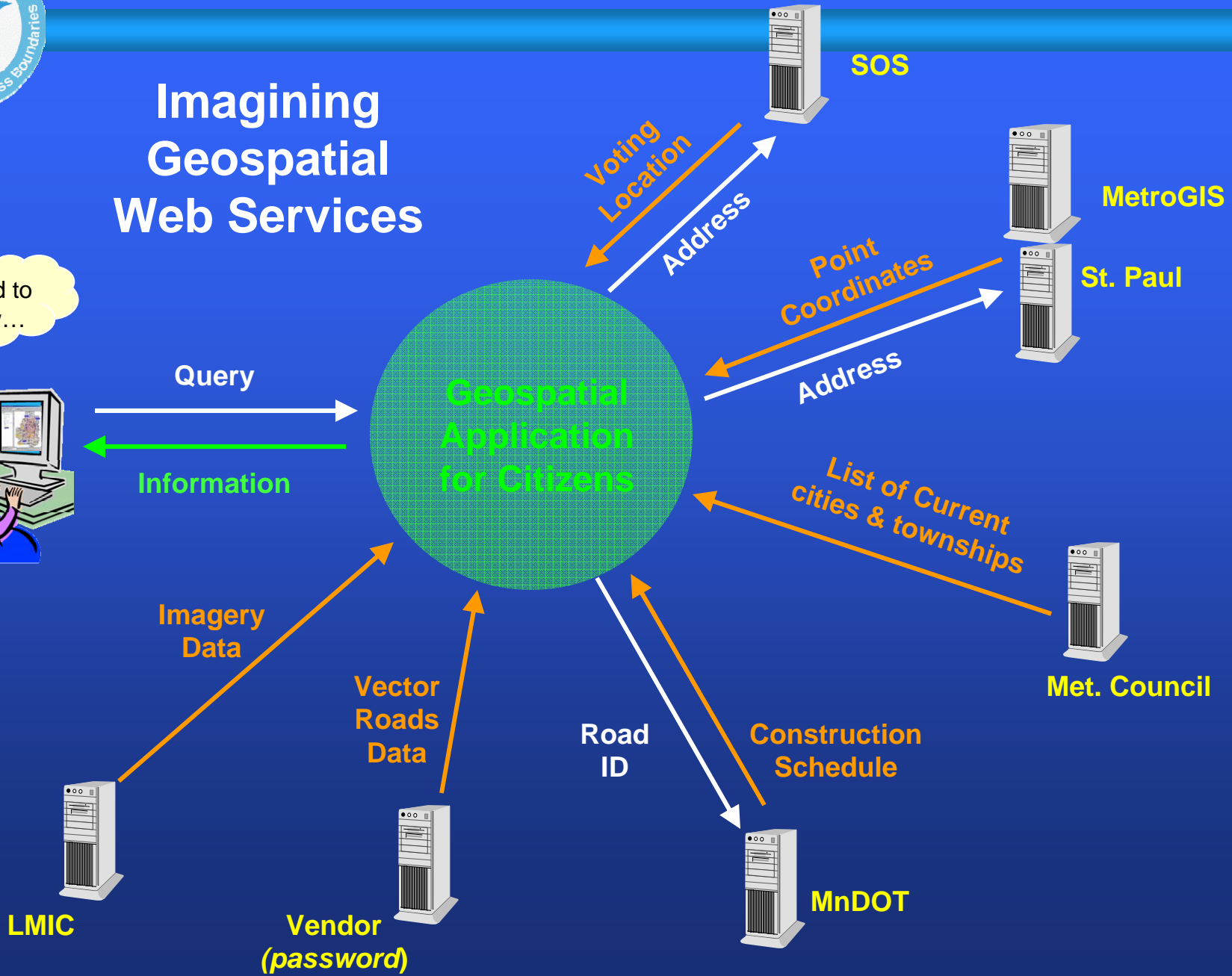


Prelude

What the Heck is a
"Web Service"?



Imagining Geospatial Web Services





Technical Leadership Workgroup

Report



Overview

- Purpose of effort
- Steps we took - process
- Workshop conclusions
- Next Steps
- Workgroup recommendations



Business Plan: MetroGIS Mission

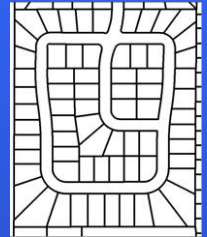
- To expand stakeholders' capacity to address shared geographic information needs through a collaboration of organizations that serve the Twin Cities metropolitan area



Business Plan: Major Functions

Facilitate:

- collaborative, regional solutions for data, **applications**, standards and best practices
- access & sharing
- knowledge sharing
- recognition of value of GIS





Business Plan: Expanded Scope

- Include **applications** and possibly infrastructure 
- Broaden participation organizationally and geographically
 - from cities up to federal, private 
 - neighboring counties, regions
- Enhancing understanding by policy makers of
 - value of GIS technology as core business tool and
 - value of collaborating to address shared needs 



Purpose of Workgroup

- Policy Board: Expand scope to applications
- Asked Coordinating Committee to Recommend
 - **Work program**
 - **Strategy**
 - **Resources**





Technical Leadership Workgroup

Formed by Coordinating Comm., start Oct. 2007
with members from Tech. Advisory Team, CC &
workgroups

David Brandt, Washington County
Jim Maxwell, The Lawrence Group
Bob Basques, City of St. Paul
Mark Kotz, Metropolitan Council

David Bitner, Metropolitan Airports Commission
Jim Bunning, Scott County
Tim Loesch, Minnesota Department of Natural Resources
Nancy Read, Metropolitan Mosquito Control District

Ben Verbick, LOGIS
Pat Cummins, ESRI

“Beyond Data” Workshop



- Jan. 24, 2008
- 31 Attendees
- GIS + IT
 - Academic
 - Non-profit
 - Private sector
 - Utilities
 - County
 - City
 - School
 - Regional
 - State

Plangraphics: Jim Fries, John Antenucci

Intro: Sharing Resources

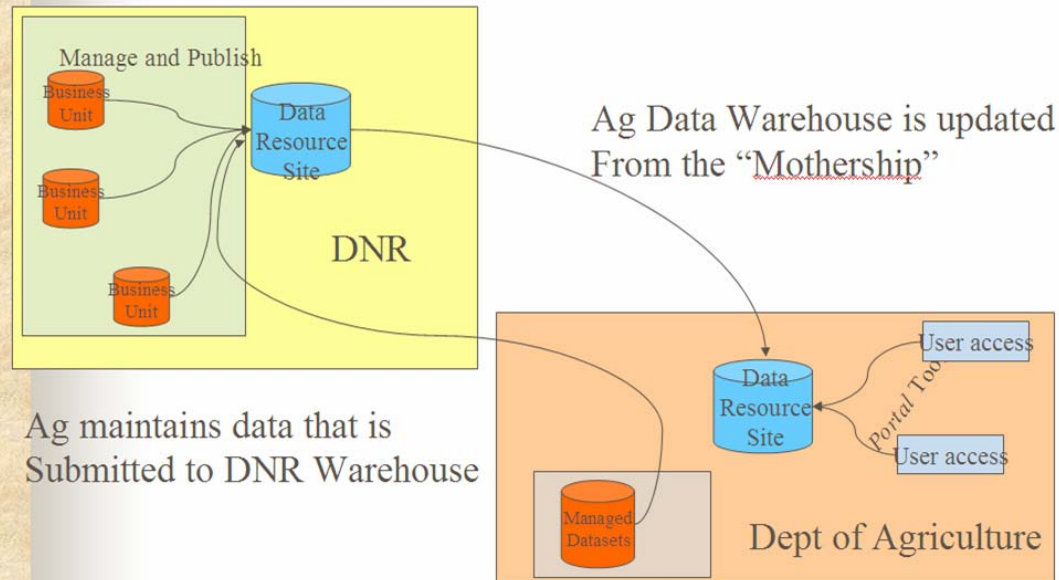


Jim Bunning, Scott / Dakota / Carver

Intro: Sharing Infrastructure

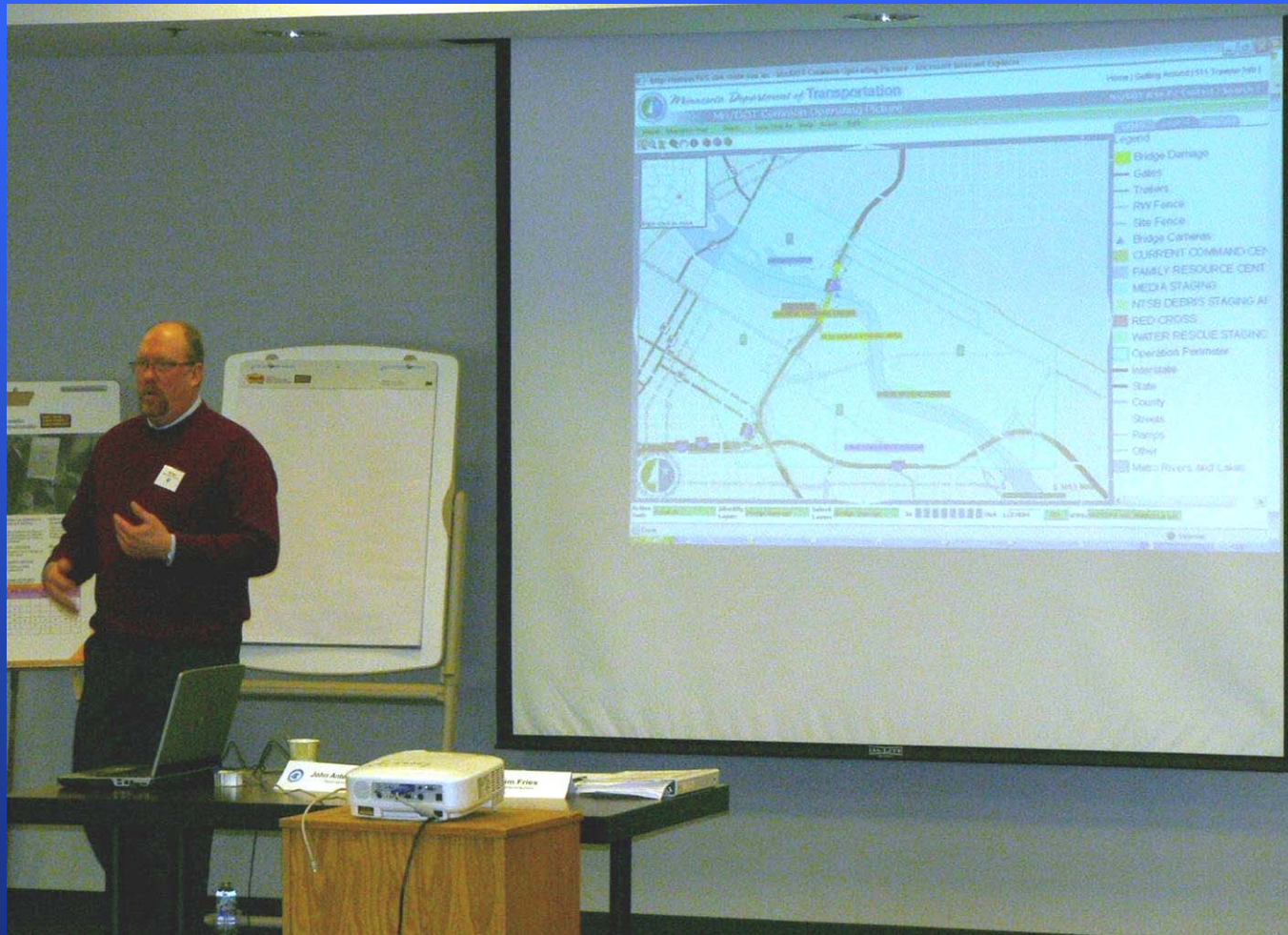


Sharing Infrastructure



Tim Loesch, MnDNR, intra & inter-agency

Intro: Applications using Services



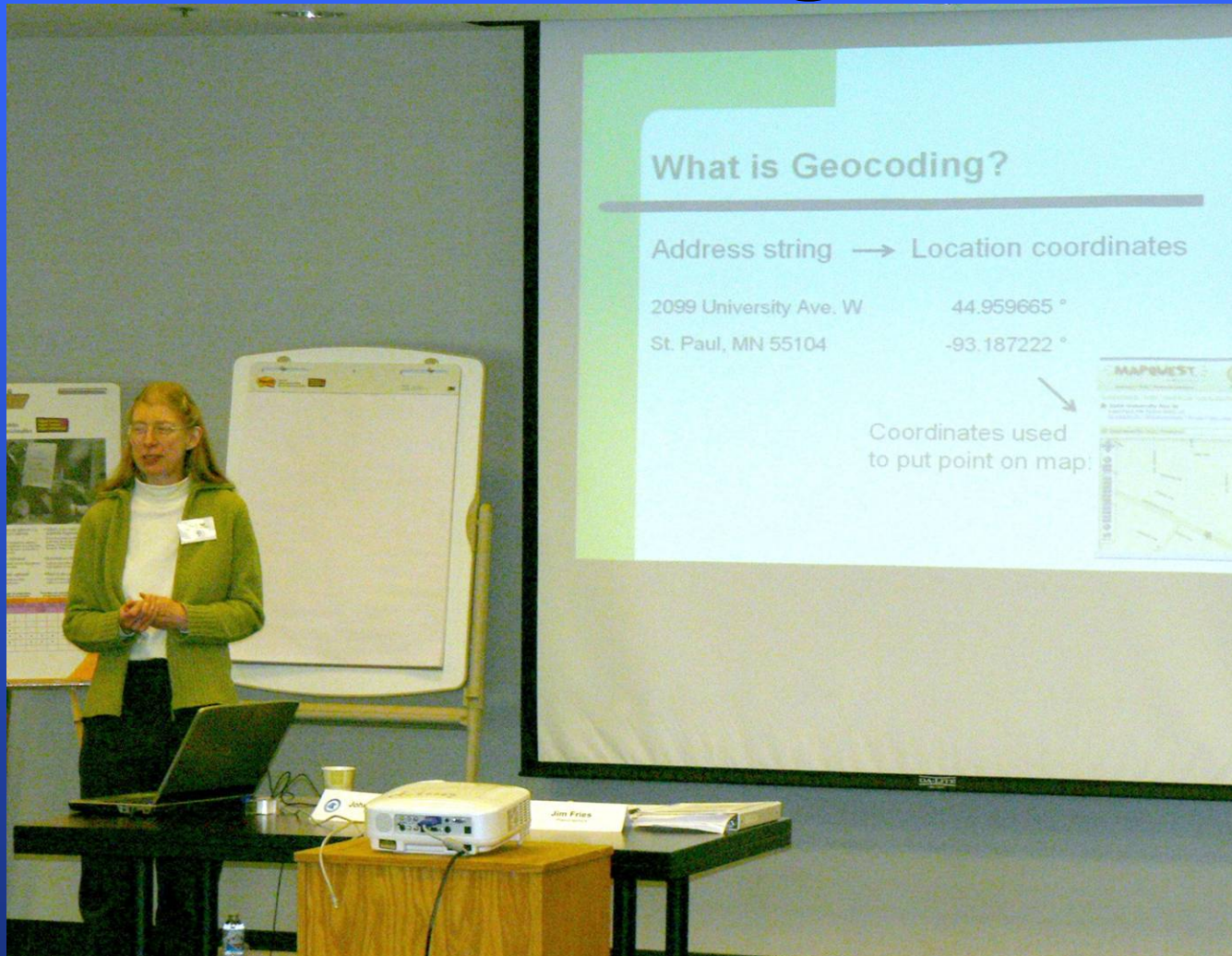
Dan Ross, MN-DOT quick response

Intro: Collaborative Development



Randy Knippel, Dakota Co. and OpenMNND

Intro: Services Using Shared Data



Nancy Read, MMCD and Geocoder

Intro: Support for Infrastructure



Ben Verbick, LOGIS

Intro: Other Examples

- King Co. (Seattle) “matrix” funding
- Louisville, KY “subscription”
- Knoxville, TN – services called from Word, Excel
- Michigan Center for Geog. Info. – building services
- Penn. Geospatial Tech. Office – load data into SDE, geocoder, plume model service



John (& Jim)



Lists - Barriers to Sharing



John Antenucci and “Money” game



Workshop Documents

- Plangraphics' Report and Tech. Ldrshp. Workgroup comments (packet p. 16)
- Attendees List (p. 30)
- Pre & Post Workshop Surveys (p. 31)
- Transcript (excerpt re: barriers to sharing, p. 39)

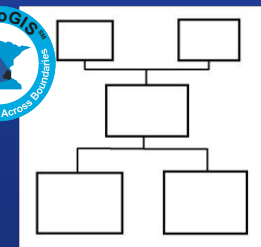
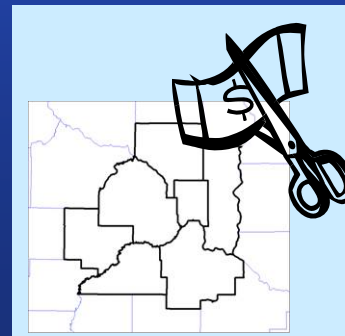
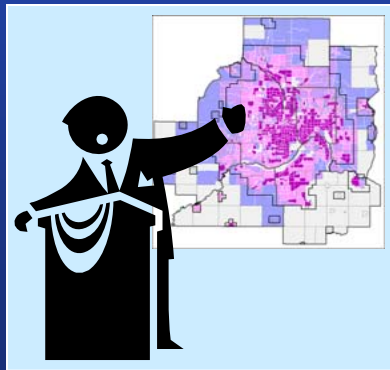
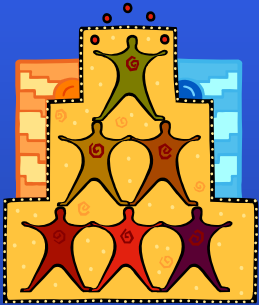


Workshop Conclusions



Corroborated existing MetroGIS efforts

- Expand scope to applications and services
- Improve processes and add data & users
- Promote knowledge sharing forum
- Build advocacy and awareness of benefits
- Fund for system wide benefit
- Optimize governance and organizational structure





Conclusions - Roles

- Appropriate MetroGIS roles with applications (table p 14)
 - **Leadership**
 - **Coordination**
 - **Policy / Procedures**
 - **Funding**
- Roles such as Development, Support & Hosting of applications can be done by MetroGIS participants to meet internal business needs



Conclusions - Sharing

Applications-related activities appropriate for MetroGIS to promote among participants (table p. 15)

1. **Write Services**
2. **Share expertise & best practices**
3. **Host / Use Services**
4. **Host Data Services**
5. **Fund other's development efforts that help your org.**
6. **Give custom applications to others**
7. **Write modules re-used by others**
8. **Share writing whole apps**
9. **Share software purchase costs**
10. **[Agree on development environment] – low rank, standardize outputs/communication instead**



Conclusions - Support

- Additional technical leadership support needed
 - **Facilitate technical collaboration**
 - **Connect resources**
- Adjust budget & work plan to pursue applications scope expansion



Next Steps (p. 10)

1. Define strategy to secure technical coordinator
2. Define and prioritize shared application and service needs
3. Populate metadata for GeoServices Finder
4. Define full data, applications and web services broker
5. Explore methods to establish trust for shared services
6. Guard against obstacles to sharing



Next Steps

7. Define communication and presentation needs
8. Create a forum for applications & web services
 1. **Visioning**
 2. **Coordinating**
 3. **Finding**
 4. **Funding**
9. Use recommendations in Outreach Plan
10. Update Leadership Development Plan
11. Update Performance Measurement Plan



Recommendation (p. 12)

1. Endorse appropriate roles for MetroGIS
2. Initiate securing technical coordinator
3. Define shared applications needs - process
4. Update outreach plan
5. Test mechanism to foster partnering
6. Adopt budget and work plan