

## Geospatial Services Directory and Broker A Proposal to MetroGIS

---

David Arbeit, Director  
 MN Office of Geographic & Demographic Analysis

David Bittner, GIS Coordinator  
 Metropolitan Airports Commission

Presentation to MetroGIS Policy Board  
 July 19, 2006

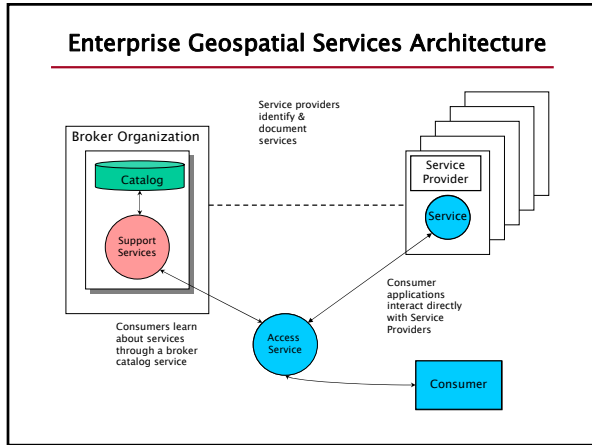
## Geospatial Services Directory and Broker Overview

---

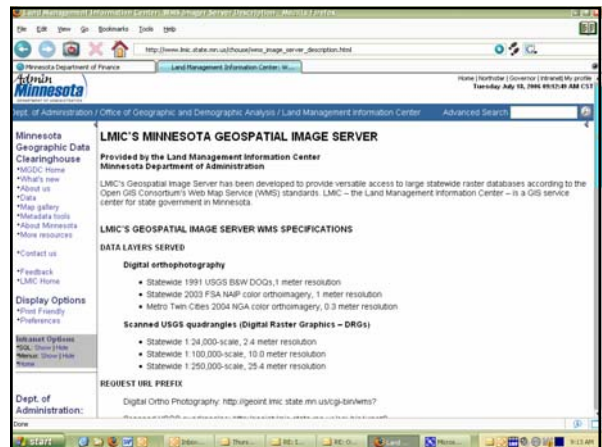
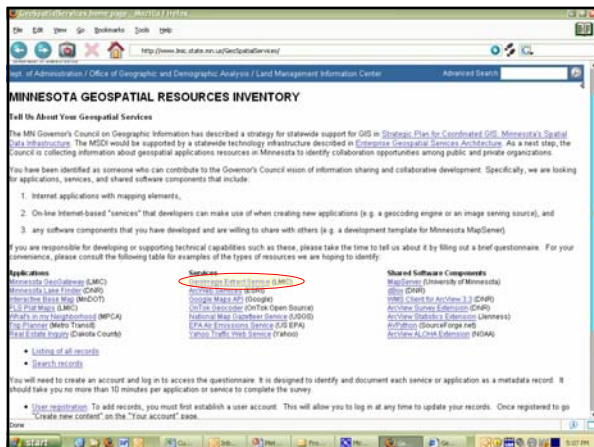
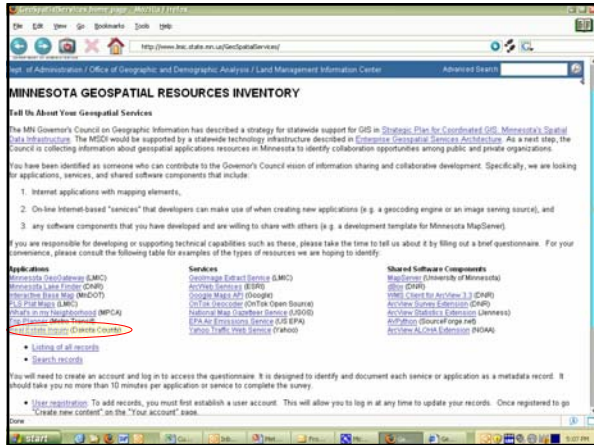
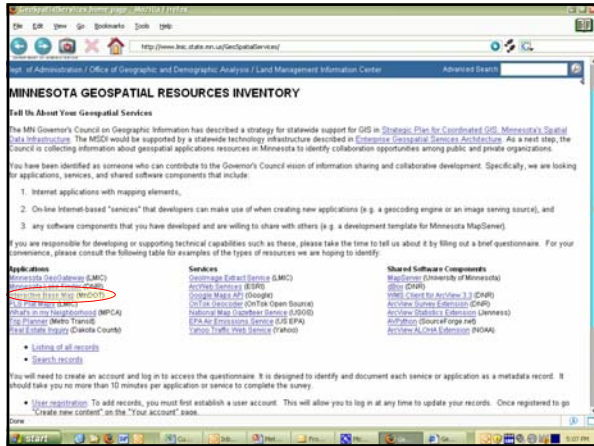
*This project will extend the MetroGIS Application Finder prototype and support the statewide Enterprise Architecture model for shared geospatial services.*

**Deliverables**

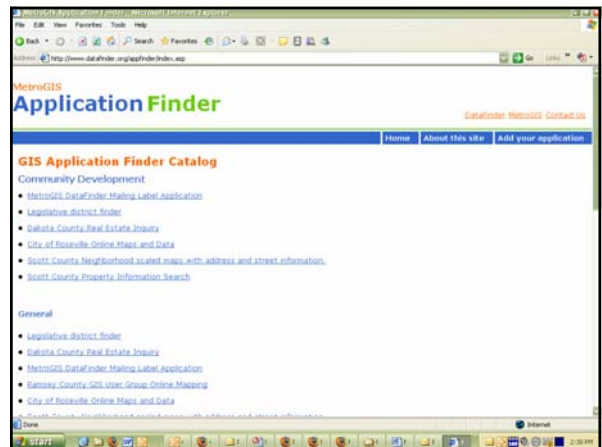
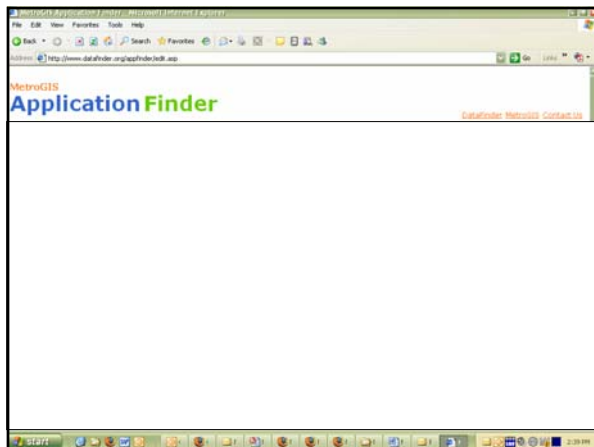
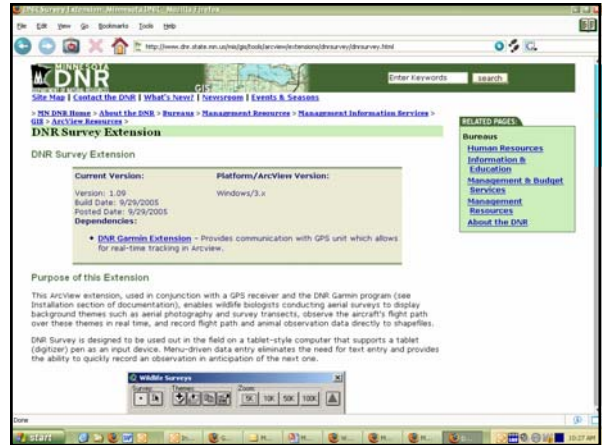
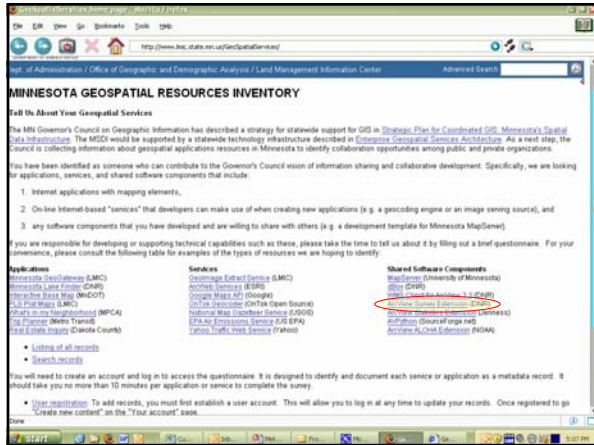
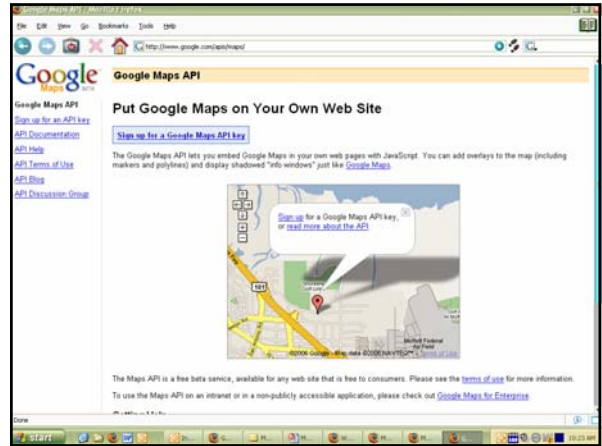
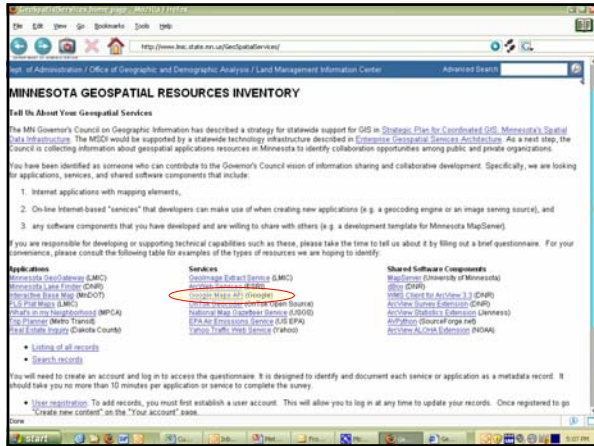
- Catalog of geospatial services and shared applications
- Interfaces for maintenance, query, and search
- Direct access to brokered shared service (WMS Image Server)
- Access to geospatial toolkit library



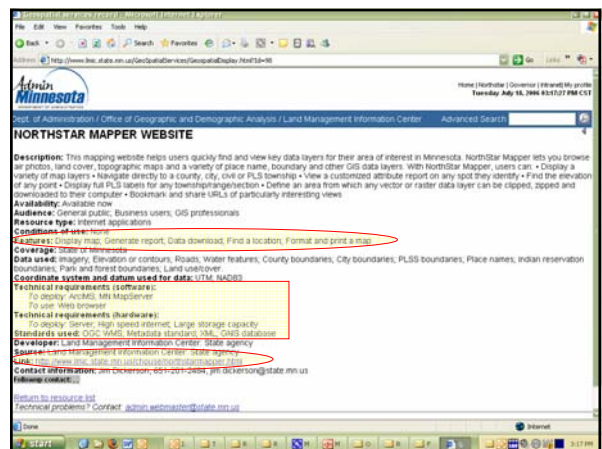
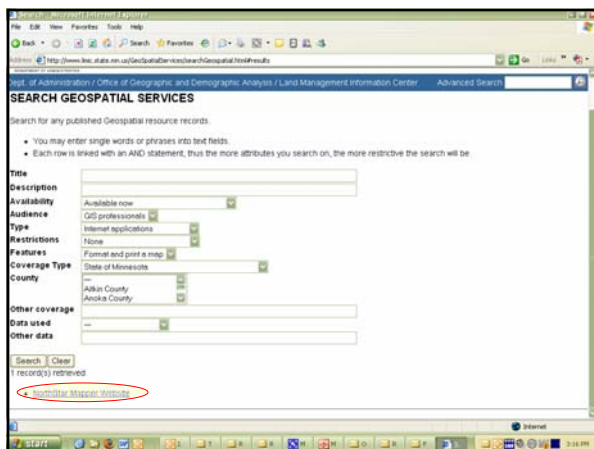
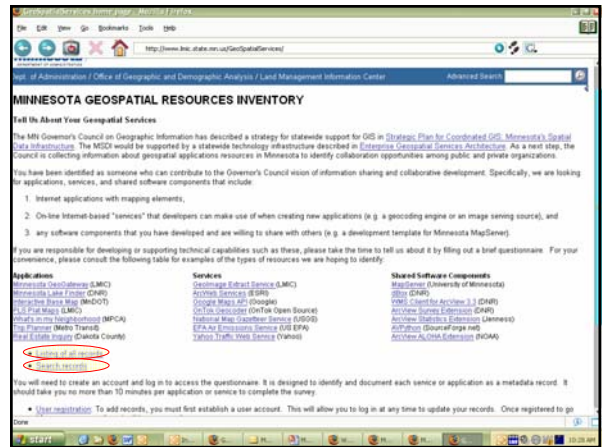
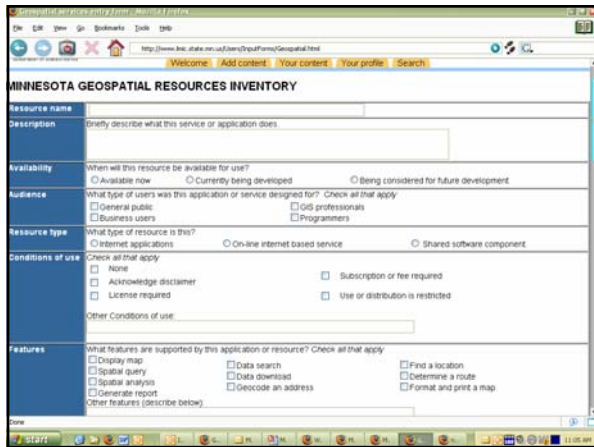
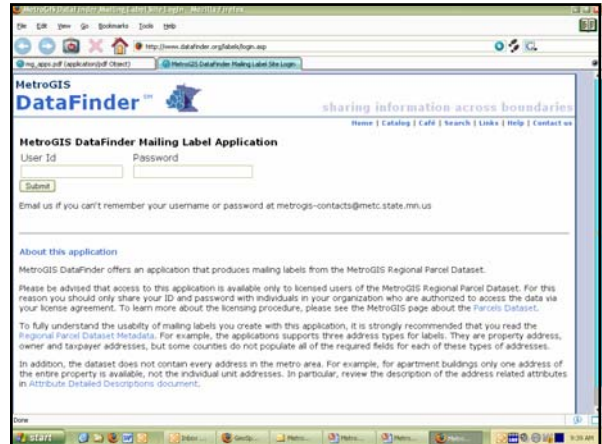
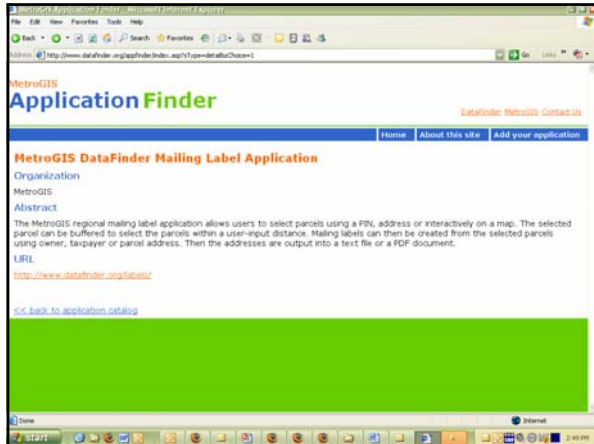
Geospatial Services Directory and Broker Project Presentation  
 David Arbeit  
 July 19, 2006



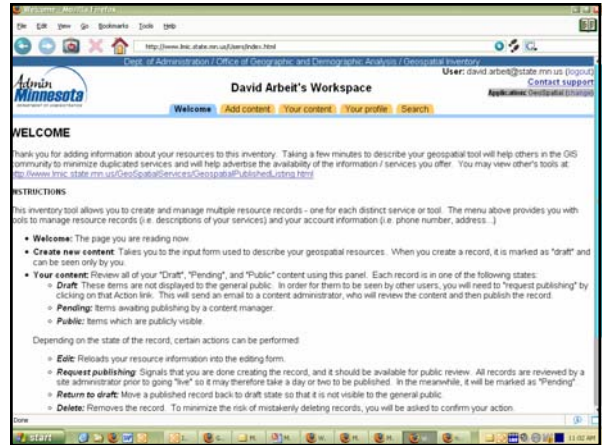
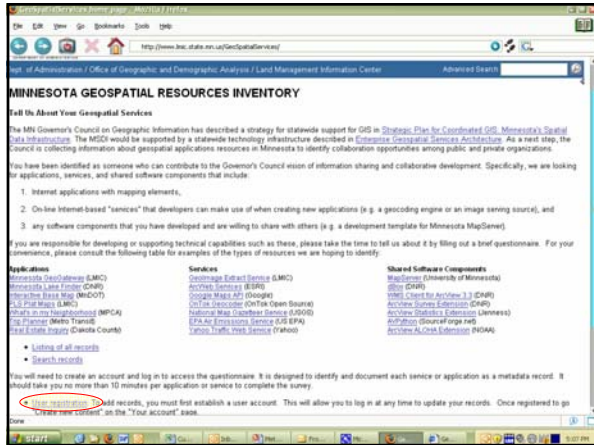
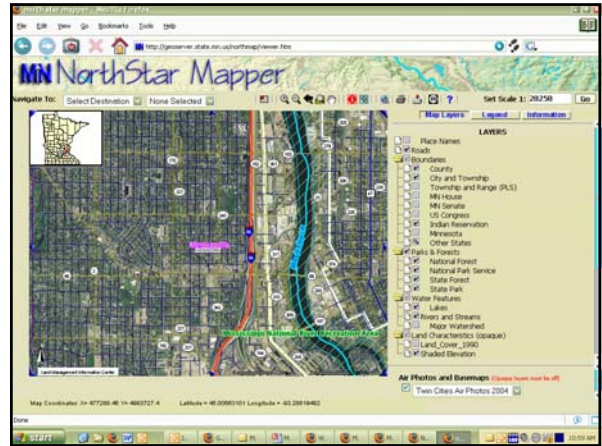
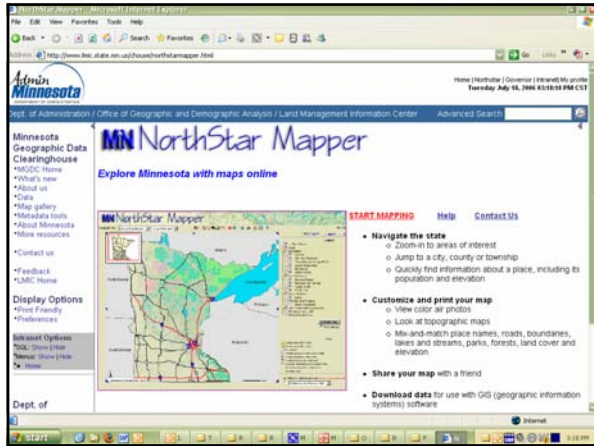
Geospatial Services Directory and Broker Project Presentation  
David Arbeit  
July 19, 2006



Geospatial Services Directory and Broker Project Presentation  
 David Arbeit  
 July 19, 2006



Geospatial Services Directory and Broker Project Presentation  
 David Arbeit  
 July 19, 2006



**Geospatial Services Directory and Broker Project Profile**

---

**Sponsors:** David Arbeit and Dave Bittner

**Technical Lead:** Land Management Information Center

**Advisors:** MetroGIS Coordinating Committee  
 Governor's Council on Geographic Information

**Grant Request:** \$20,000

**Value of Leveraged Resources:** \$60,000 to \$75,000

**Project Period:** 6 to 9 months

**Minnesota State GIS Enterprise Conceptual Architecture Design**

---

Questions  
 and  
 Comments