


The Minnesota State GIS Enterprise: Strategic Directions and Policy Considerations

Fred Logman, Project Manager
Land Management Information Center

and

Robert Maki, GIS Manager
Minnesota Department of Natural Resources


Governor's Council on Geographic Information
Geospatial Architecture Committee



Topics to be Covered


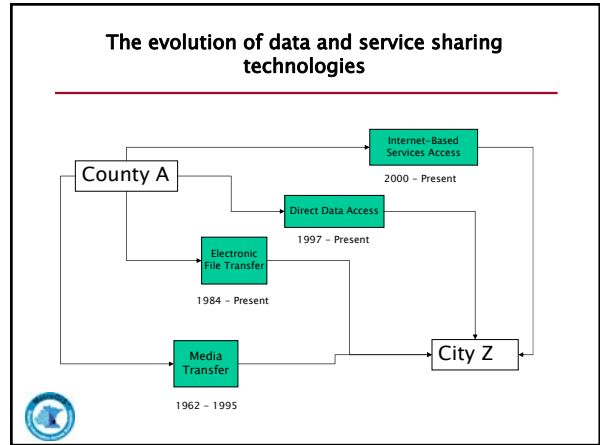
- Why is the state organizing around enterprise principles?
- The evolution of information sharing technologies
- The Minnesota state enterprise design concept
- Organizational impacts to enterprise participation
- Next steps

Questions - Answers - Feedback



Why is the state organizing around enterprise principles?

- Increasing workloads
- Decreasing funding
- Obvious redundancy in effort
- Need to integrate spatial and traditional information systems technologies
- Emerging technologies
 - Network communications
 - Open source development
 - Standards





What is an Internet-Based Computing Service?

A service made accessible to a computer user or a programmer via the Internet

The term "service" is a rich concept


A "service" is provided by a routine, program or an application system that performs a specific function and/or provides a very succinct piece of information in response to a question, a set of parameters or a command

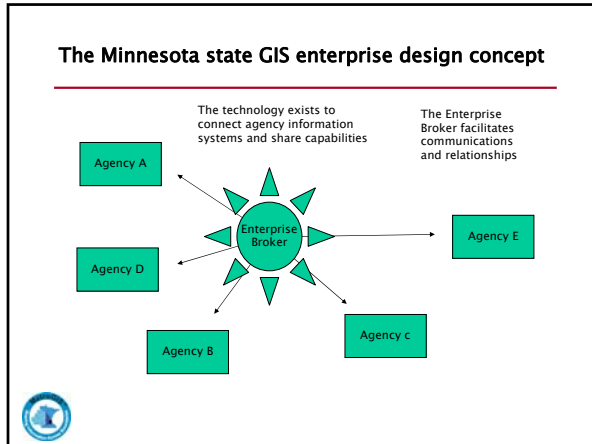


What is an Internet-Based Computing Service? (continued)

The service being provided can be very simple, like receiving a yes or no answer or something much more complex. Some examples include:

- Is this parcel in a floodplain?
- Is this person a convicted sex offender?
- Give me a list of all schools within a 2 mile driving distance of this location
- Send me an Internet link showing an aerial photograph of a one mile area around a proposed sub-division
- Make a map of bus and light rail routes between two locations with landmarks for reference (as a web link)





Enterprise Broker

What is an Enterprise Broker?

- A "Broker" is a combination of human and technological (hardware & software) resources that addresses the question - *How can we be confident that the services and/or data provided by another agency can be counted upon?*

Enterprise Broker

Why do we need a Broker?

- Identify opportunities for sharing - reducing redundancy
- Assist agencies with "publishing" their data and services
- Ensure quality and availability of data and services
- Assist users with finding and using data and services
- Ensures that the clearinghouse of available data and services is responsive and meets users needs

Enterprise Solution

What is needed to make this vision a reality?

- Individual agency commitment and willingness to share data and services as well as not doing everything themselves
- Community recognition of a different way of doing business and agreement to work together to make it happen

How Partnering Agencies Contribute

Individual agency functions

- Identification and publication of data and services they are willing to share
- Commitment to providing a quality product and maintaining its availability to others
- Generation of metadata for the data and/or services they are providing
- Willingness to trust and be dependent on others
- Use of open and/or common technology
- Recognition of community and commitment to being a participating member

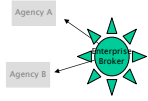
The broker contributes common enterprise functions

Shared Functions


- Identification and cataloguing of opportunities for sharing services and data
- Development, adoption and adherence of standards and open and/or common technologies
- Establishment and maintenance of broker functions
- Establishment of "utility" functions for the community

Opportunities

Why Pursue a New Architecture?



- Reduced resources
- Provide opportunities to collaborate and improve business processes
- Improve quality of data and services
- Increase Quantity of data and services available



Challenges

What are some of the obstacles to implementation?



- Organizations naturally resist change
- Limited resources to invest in new directions
- Mistrust of dependencies between organizations
- Institutional barriers to sharing resources
- Politics and perceptions



The Minnesota State GIS Enterprise

Next Steps

- Recognize the need to do things differently
- Identify and implement opportunities for sharing services
- Prototype enterprise components
- Develop trusting relationships between organizations
- Support and help building the "Broker" function



The Minnesota State GIS Enterprise: Strategic Directions and Policy Considerations

Questions and Discussions

Fred Logman, Project Manager
Land Management Information Center

And

Robert Maki, GIS Manager
Minnesota Department of Natural Resources

Governor's Council on Geographic Information
Geospatial Architecture Committee

